



Saksham

One More Year Of
Upholding Inclusivity

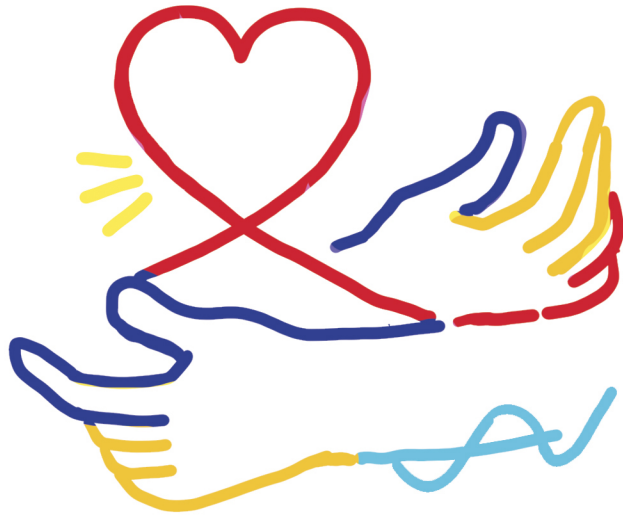


An Annual Magazine for the Financial Year 2025-26

First Edition

Table of Contents

●	A Home in the Making	4
●	Leadership Perspective	6
●	Founder's Story	7
●	In His Words	8
●	At the Heart of India Autism Center	9
●	Our Core Values	10
●	Our Journey So Far	11
●	Our Focus Areas	12
●	Soul on Canvas	14
●	Samaavesh: A Place to Belong	15
●	Five Domains of Living	16
●	Services at Samaavesh	18
●	From the Desk of the Clinical Department	19
●	Our Residential Facilities and Services: A Place for Every Need	20
●	What Makes Samaavesh Built for Belonging?	22



● From the Desk of Samaavesh	23
● Manan: Strengthening the Hands That Care	24
● Manan Programs	25
● From the Desk of Manan	27
● Khoj: Bringing Clarity to Autism Research	28
● Research In Motion: Ongoing and Beyond	29
● From the Desk of Khoj	30
● A Partnership Rooted in Purpose	32
● Our Key Partners	34
● Our Key Donors	36
● Events	38
● Performance Highlights	39
● Financial Snapshots	40
● Moments That Speak	42



A Home in the Making...

This past year has been a year of transition and a year of intent for India Autism Center.

We have moved from planning to building.
From asking what lifelong care could look like, to beginning to put it in place.

At every stage, one question has stayed with us.
How do we create a future where individuals with autism and related conditions are not just supported, but included in ways that are real and sustainable?

That question has shaped our choices.

Across our programmes, the work has been focused on strengthening the foundations.
Through Manan, we invested in people by training caregivers and professionals.
Through Khoj, we continued to build understanding through research.
Through Samaavesh, we made steady progress towards residential living designed around dignity, safety, and everyday life.

What matters to us is not only what is being built, but how it is being built.

***We have drawn from lived experience as much as from clinical knowledge.
We have tried to stay with what is necessary, even when it is not the easiest path.
And we have listened carefully. To families, to professionals, and to individuals themselves. Their realities continue to shape the way we move forward.***

This magazine reflects that process.
It brings together milestones, but also the learning behind them. The adjustments, the questions, and the work that often go unseen.

Because progress, for us, is not only about outcomes. It is about building something that can hold up over time.

As we move into the next phase, our focus remains steady.
To strengthen systems that endure.
To expand care that is thoughtful and responsive.
And to bring together learning, research, and community living in practical, connected ways.

We are grateful to everyone who has been part of this journey. Families, partners, staff, and supporters.

Together, we are not just building an institution.
We are building something that we hope, in time, will simply feel like the way things should be.

With Love,
Sakhi Singhi





A key area of focus was the continued development of the Primary Support Staff (PSS) programme, which underpins daily care, learning, and wellbeing on campus. The successful completion of the third PSS cohort strengthened our pipeline of trained staff aligned with IAC's care philosophy.

Jaishankar Natarajan

Chief Executive Officer,
India Autism Center



Leadership Perspective

A Message from the CEO:

With Phase 1 set to open, our priorities are clear.

Sustainable clinical systems, governance that scales, and short-stay programmes that broaden access from the outset.

This has been a year of building. Not just infrastructure, but the systems, people, and practices that will define how IAC delivers care for decades to come.

Phase 1 of Samaavesh moved from blueprint to reality. Progress was steady, with an uncompromising focus on safety, quality, and the practical demands of everyday living. Growing interest from families also pushed us to think carefully about operational readiness. Not just whether we could open our doors, but whether we were truly prepared to do so well.

The third cohort of our Primary Support Staff programme completed training successfully. This programme is the backbone of daily life at Samaavesh, and getting it right, in values, skill, and care philosophy, is non-negotiable.

We also advanced two efforts that will shape clinical quality in the long term: a technology platform to underpin all interventions at Samaavesh, and a research initiative to develop an assessment battery for autistic individuals with high support needs. Both are foundational to delivering care that is consistent, informed, and individualised.

This year also marked the beginning of a significant external partnership with Ruskin Mill Trust, UK, one that has already begun to shape our thinking on care and learning. More on that later in this magazine.

With Phase 1 set to open, our priorities are clear. Sustainable clinical systems, governance that scales, and short-stay programmes that broaden access from the outset.

The work ahead is significant. So is the opportunity.

FOUNDER'S STORY

The greatest barrier for individuals autism and related conditions is not their diagnosis—it is the world around them. A world that often excludes rather than understands.

In India, over four crore individuals face this reality daily, as schools, workplaces, and communities fail to support life beyond early intervention.

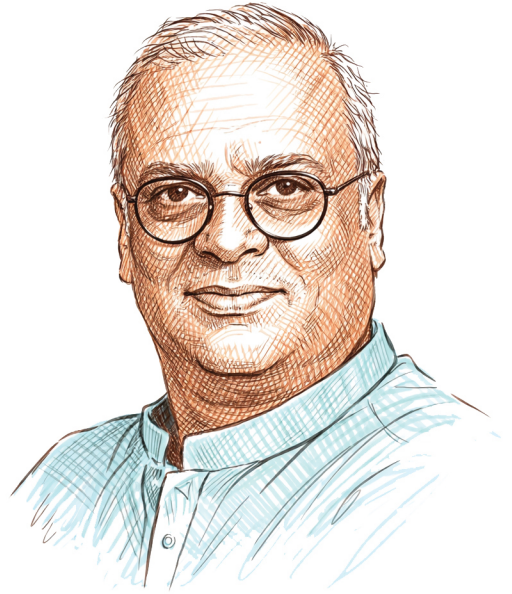
Our founder, Mr Suresh Somani, is one such parent. Like millions of families, he faced the painful gap between childhood interventions and lifelong care.

Instead of asking, “Why doesn’t this exist?”
He asked, “Why can’t we build it?”

Today, IAC stands as a place where autistic individuals can belong, grow, and live with dignity for life.



IN HIS WORDS



I didn't begin my journey as a professional in autism; I began as a parent.

Like millions of families, I faced the same question over and over:

**What happens after childhood?
After school? After therapies end?**

When no answer existed, I asked a harder question:
Why not build it?

That question became the India Autism Center, not just a facility but an ecosystem where individuals with autism belong, grow, and live with dignity. Through **Samaavesh**, **Manan**, and **Khoj**, we are building systems that combine care with structure and compassion with evidence.

Our vision is clear. Autism care in India should be integrated, lifelong, and respectful, because the true measure of a society is how it safeguards its most vulnerable.

Suresh Somani

Managing Trustee,
India Autism Center



When no answer existed, I asked a harder question:

***Why not
build it?***

At the Heart of India Autism Center

Every individual with autism deserves the opportunity to live with dignity, purpose, and belonging.

That is not a distant ideal. It is something that can be built carefully and deliberately when care, learning, and community are brought together in one place and sustained across a lifetime.

This is what IAC is.

Our Vision

We aim to create a world-class ecosystem that provides holistic care and enables the neurodiverse community to be self-reliant.

Our Mission

- ▶ Build a nurturing campus for 600+ individuals with autism and related conditions
- ▶ Empowering and upskilling professionals to support individuals on the spectrum
- ▶ Spearhead research to ensure appropriate assessments and interventions
- ▶ Create a circular economy by employing individuals on the spectrum



Our Core Values

Our work is guided by values that shape how we think, act, and care. These principles influence every decision we make—from supporting individuals with autism to building a community rooted in dignity, empathy, and responsibility.



Mindset

1. Pursuing the vision
2. Detachment
3. Self-regulation / non-indulgence
4. Spirit of renunciation
5. Service mindedness
6. Non violence
7. Original thinking/Not following the herd
8. Objectivity
9. Firm conviction
10. Humility
11. Duties not rights



Approach

1. Embracing Indianness - history, localise
2. Thematic approach
3. Cleanliness
4. Prioritise environment
5. Safety & Health first
6. Non violence
7. Skillfulness
8. Steadfastness/Consistency in actions
9. We and not I
10. Adherence to laws (Laws of nature & laws of the land)
11. Long-term approach/Avoid shortcuts



Relations

1. Empathy
2. Purity
3. Charity
4. Gratitude
5. Non violence
6. Reducing fear
7. Ego and complexes
8. No hatred
9. Friendly
10. Forgiving

Our Journey So Far

1

2009

Taking the First Step

Suresh Somani and his wife Namita, founded the Amrit Somani Memorial Centre, a place of care for individuals with autism and related conditions.

3

2021

Grounding Practice in Knowledge

A dedicated research department was established, rigorous and academically rooted, committed to ensuring that the care IAC offers is always shaped by evidence and honest inquiry.

2

2019

Becoming IAC

The India Autism Center was formally established. A vision was taking shape.

A diagonal timeline graphic consisting of a solid black line between two dashed lines, sloping upwards from left to right. Three white circular markers are placed on the solid line. Dotted lines connect these markers to text blocks. A red circular dot is at the end of the dotted line for the 2025 block, and another red circular dot is at the end of the dotted line for the 2026 block.

5

2025

Accreditation Earned

The Rehabilitation Council of India formally accredited IAC's training course, bringing national recognition to a programme built on genuine expertise and care.

6

2026

A Home for Life

Samaavesh, IAC's residential campus in Sirakol, begins to take form. Rooted in dignity, safety, and belonging

4

2024

Building a Workforce

A structured caregiver training programme was launched, equipping professionals with the skills this work demands and opening pathways to sustainable, meaningful careers in autism care.

Our Focus Areas



Samaavesh

Residential Campus

Safe, structured, long-term living for individuals with autism and related conditions.



Manan

Professional Training

Building India's next generation of autism support workforce.



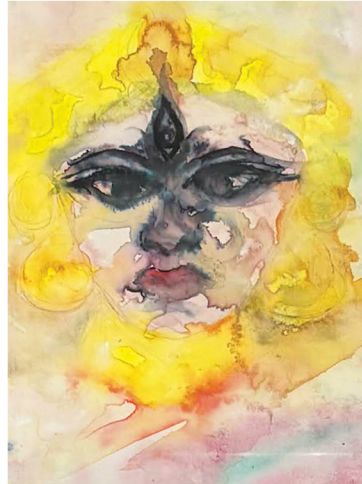
Khoj

Research & Knowledge

Creating evidence-based, India-centric autism research.

Soul on Canvas

More than expression—it's identity.



Made by kids on the spectrum

Samaavesh: A Place to Belong

As a parent, you know how much effort it takes for your child to navigate a world not designed for their needs. Every day spaces can feel overwhelming, and comfort often comes second to constant adjustment.

At Samaavesh, we set out to change that. This residential facility is designed as a sensory-friendly home for individuals with autism and related conditions.

Located in Sirakol, just an hour from Kolkata, every place at Samaavesh is thoughtfully planned to help residents feel calm, understood, and confident in their daily lives.

Samaavesh Amphitheatre: Render Image



Five Domains of Living

At Samaavesh, care is not separated from space—it is built into it. The campus is organised around five interconnected domains, where environment and programme work together to support everyday life.



1. Safety & Comfort

Designed with sensory needs in mind, the built environment ensures calm, predictability, and safety. Behaviour support and sensory regulation programmes are integrated into daily routines, with the environment itself acting as a therapeutic tool.



2. Health & Wellness

Dedicated clinical and wellness spaces support physical and emotional health. A multidisciplinary team delivers coordinated care—ensuring therapies, medical support, and wellbeing practices work together seamlessly.



3. Learning & Growth

Purpose-built learning, vocational, and therapy spaces enable structured, meaningful engagement. Guided by the ICF framework and IAC's Siddhanta philosophy, programmes focus on building real-life skills, independence, and participation.



4. Community & Joy

Green spaces, sensory gardens, and activity zones create opportunities for connection and recreation. Daily programmes in arts, activities, and community living foster joy, consistency, and a sense of belonging.



5. Family & Future

With family residences on campus, care extends beyond the individual to the entire support system. Families are active partners, with access to guidance on planning, guardianship, and long-term security.

Services at Samaavesh

Clinical

- Physiotherapy
- Animal-Assisted Therapies
- Occupational Therapy & More

Vocational

- Non-Fire Cooking and Baking
- Computer and Logistics Training
- Organic Farming & More

Daily Life & Recreational

- Art and Craft
- Sensory Garden
- Experiential Center & More

Medical

- Consultant Physicians
- Pathology and Diagnostics
- Resident Medical Officer & More

Wellness & Holistic Learning

- Gym
- Yoga
- Swimming & More

Guardianship & Financial Support

- Legal Guardianship Guidance
- Nominee & Inheritance Planning
- Trust Formation Support & More



From the Desk of Clinical Department



This year, we reshaped our clinical vertical with one clear goal: to support individuals not just in therapy rooms, but in everyday life.

So, we moved from isolated interventions to a structured, connected system of care and hence, redesigned our programmes around age and support needs.

Instead of focusing only on therapy sessions, we now integrate assessment, daily living skills, and family involvement into every care plan.

A key advancement this year was adopting the International Classification of Functioning (ICF) framework, which gave our multidisciplinary team a shared language and structure. This shift helped standardise clinical workflows and ensured that assessments, Individualised Programme Plans (IPPs), and Individualised Education Plans (IEPs) prioritise practical outcomes such as communication, self-care, and participation in daily life.

We also made meaningful progress in innovation and learning. We completed the draft of our arts-based curriculum and had two initiatives—Autism-Friendly Clothing and ICF-WHO PIR—selected for presentation at IACAM-CON 2025, reflecting the relevance of our work beyond our campus.

Looking ahead, we are focused on digitising progress tracking, moving from offline records to integrated online systems. We will continue strengthening impact measurement, clinical research, and staff training.

Shaireen Ali

Coordinator,
Clinical Team

Our Residential Facilities and Services: A Place for Every Need



Family Living:

Live alongside your loved ones in an inclusive, supportive environment. Professional care from certified caregivers is available whenever needed.



Community Living:

Become part of a vibrant, caring community with certified caregivers providing round-the-clock support. Here, daily life is guided by consistency, connection, and compassionate care.





Nitya | IAC Residence



Nirmala | Therapy Block



Ekam | Welcome and Admin Block



Shanta | Wellness Block



Aparoksha | OPD Block



Avyaya | Guard House



Nirvikara | Security Block



Ananta | Music Block

What Makes Samaavesh

Built for Belonging?

- **Expansive Campus**
Designed for sensory comfort and independent living
- **Sustainable Construction**
IGBC Precertified Platinum, zero-discharge, and designed for self-sustainability
- **Green & Open Areas**
Gardens, walking paths, and nature zones for relaxation
- **Sensory-Friendly Spaces**
Light, sound, and textures that calm rather than overwhelm
- **Island Living Redefined**
Breathtaking views, serene surroundings, and a vibrant community
- **Architectural Principles**
Functionality first, minimalistic architecture, high ceilings and no false ceilings
- **Safety & Ease of Movement**
No sharp edges, wheelchair-enabled elevators, 24x7 surveillance and geo-fencing
Sensory-Friendly Interiors
- **Sensory sensitivity, therapeutic harmony, monotone colour palette and anti-skid hardscape**
- **Essential Infrastructure & Services**
Central STP, hydropneumatics water supply, dedicated pedestrian zone and solar panel



From the Desk of Samaavesh



Building Samaavesh has not been a conventional construction journey. It meant rethinking how infrastructure supports autism. Designing for sensory comfort, safety, predictability, and independence required us to go beyond conventional construction.

The campus spans 159,001 square metres, with thoughtful land allocation that prioritises openness, nature, and function. Over 48,000 square metres have been dedicated to tree plantation, creating calm, green buffers that support sensory regulation and wellbeing.

From acoustics and lighting to movement flow and personal space, we approached every element with clinical guidance. Balancing these needs with infrastructure realities, timelines, and scale brought its own challenges.

But we stayed committed to getting it right rather than getting it fast.

Today, we are nearing the completion of Phase 1 of the campus. Key infrastructure is in place, including residential living units, therapy and clinical spaces, common activity areas, staff facilities, medical and wellness rooms, and essential safety and accessibility systems.

With over 2.37 lakh square feet of built-up area ready across essential facilities like residential housing for individuals, parent residences, staff housing, a fully developed clinic block, expansive learning and performing arts spaces, a wellness block, administrative and utility buildings, and secure campus infrastructure.

As we prepare to open Phase 1, our attention is already turning toward Phase 2. This next stage will expand residential capacity, strengthen vocational and life-skills spaces, and deepen integration between care and learning.

Nishant Shah

Head of Projects,
India Autism Center

Manan: Strengthening the Hands That Care

The right support can change the shape of someone's day. Manan ensures that those providing it are genuinely prepared.

We train Primary Support Staff and caregivers in the practical skills that autism care demands. Understanding behaviour. Supporting communication. Building routines that bring stability and confidence to everyday life, for the individual and for the people beside them.





This shift we are bringing with our following programs:

Primary Support Staff

Course Features

- **RCI-Certified:** Internationally recognised accreditation
- **600-Hour Curriculum:** Theory, practical sessions, and field training
- **Bilingual Delivery:** Offered in English and Bengali

Course Eligibility

- Have completed 10+2 education with a minimum of 50% marks
- Are actively seeking stable, fulfilling employment

Senior Primary Support Staff

Course Features

- **Job Focused:** Designed for employment at special schools and therapy centers
- **Medium of Delivery:** Offered in English

Course Eligibility

- Have completed at least a Diploma in Nursing or Special Education
- Seeking rewarding and growth-oriented employment



From the Desk of Manan



Over the past year, we made measurable progress. We graduated Primary Support Staff (PSS) and Learning Support Specialist (LSS) batches, while continuing training for 18 PSS candidates under our RCI-recognised programme. We also selected 100 candidates with nursing and special education backgrounds for our new course, Senior Primary Support Staff (SPSS).

This year, we organised 11 workshops and 5 webinars across colleges, universities, corporates, and professional groups. We also trained 4 batches of IAC employees and conducted a foundation course for college students.

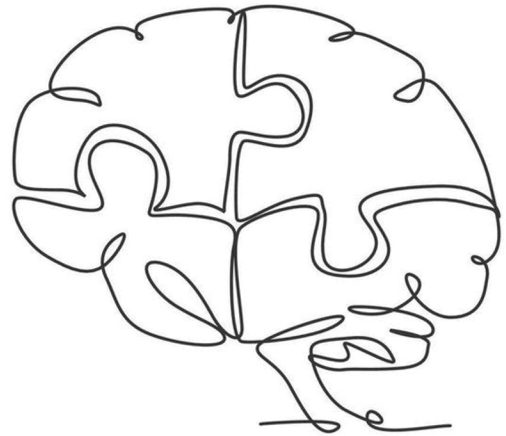
Through collaborations with special schools, day care centres, and universities, we ensure training remains grounded in real-world care.

Because when caregivers are prepared, care improves. And when care improves, individuals with autism are better supported to live with dignity, confidence, and belonging.

Medha Dey
Coordinator,
Manan

Khoj

Bringing Clarity to Autism Research



IAC – Deciphering behavior through detailed phenotyping.



IN-K – Providing deep clinical expertise and patient insights.

tcg crest

Inventing Harmonious Future

CHINTA (TCG Crest) – Tracing the biological roots of

Families often face unanswered questions about autism. This is because research has traditionally operated in silos. Khoj, our research arm, brings these efforts together.

Through culturally informed insights and international collaborations, we aim to position India as a leader in pioneering advancements that benefit individuals with autism and related conditions worldwide.



Research In Motion: Ongoing and Beyond

- 1 Global Youth Mental Health – A Wellcome Trust Initiative**
Mapping strategies to improve youth mental health worldwide.
- 2 Autism Priorities in India – A Community-Led Study**
Presented at INSAAR, this study identifies key needs of India’s autism community.
- 3 Uncovering the Autism-Parkinson’s Connection**
Researching shared traits between autism and Parkinson’s to uncover new insights.
- 4 Building a Culturally Inclusive Autism Test Battery**
Creating adapted behavioral tasks to improve autism research participation.

From the Desk of Khoj

At Khoj, we believe research must not be confined to journals. It must address societal gaps, unanswered questions, and meaningfully impact lives. Over the years, we focused on building research that is rooted in the Indian context, guided by ethics, and driven by meaningful outcomes for the neurodivergent community.



Bhisma Chakrabarti

Head of Department,
Khoj



This year marked an important phase of growth and consolidation. Our research team expanded to 7 members, allowing us to work in parallel across data collection, analysis, and project development. And we strengthened our research infrastructure by investing in psychophysiological equipment and standardised cognitive assessment tools, ensuring our work meets global standards while remaining locally relevant.

Alongside this, we actively shared our findings on international platforms, contributing to the global autism research dialogue.

One of our key achievements this year was publishing the largest study to date examining autistic features in Parkinson's disease and other motor disorders, in collaboration with the Institute of Neurosciences, Kolkata.

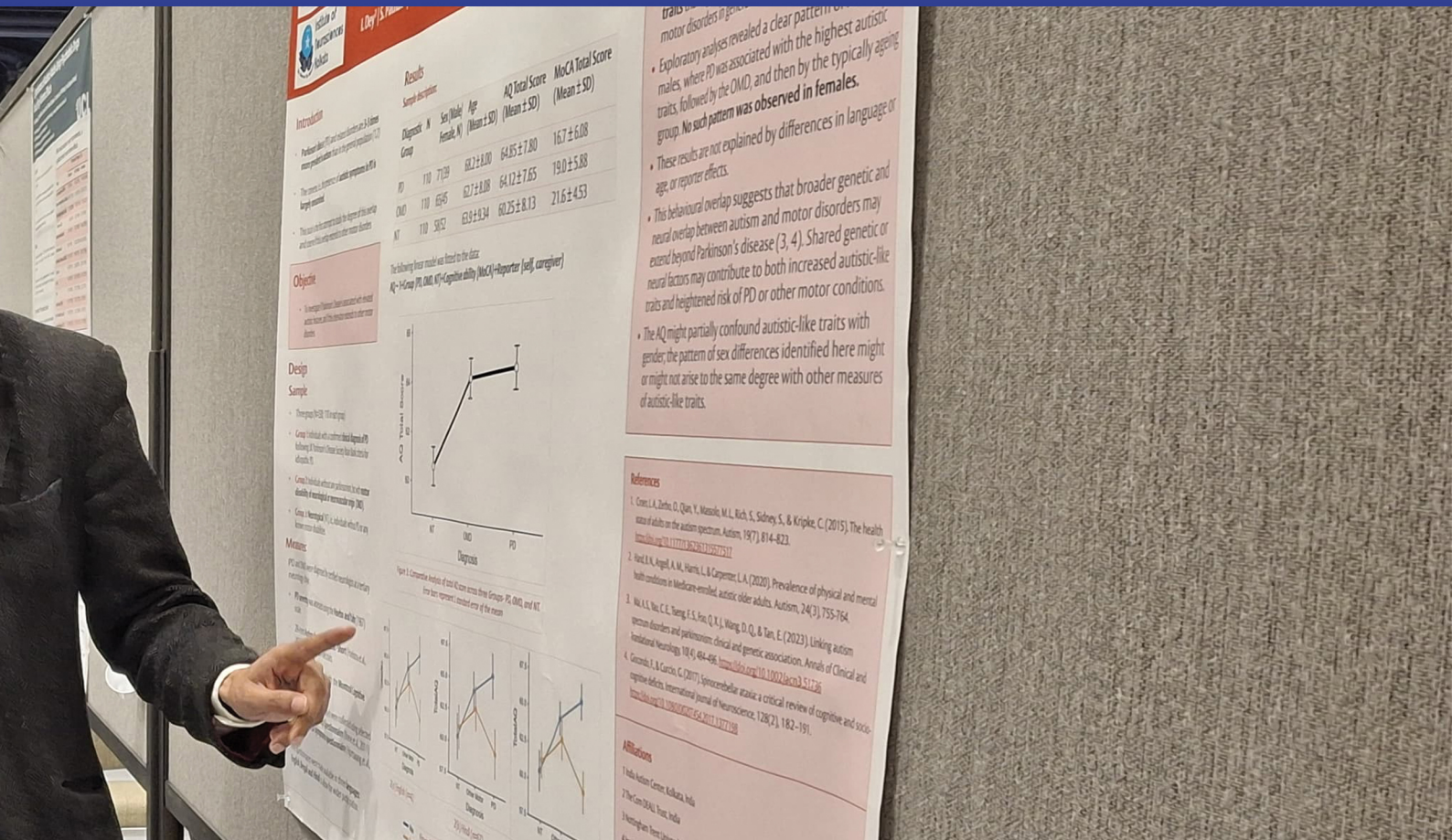
Presented at INSAR 2025, the premier global autism research conference, the study revealed higher autistic traits in individuals with motor disorders, highlighting shared biological pathways and reinforcing the need to consider autistic features when planning care for older adults.

At the same time, we initiated a major ongoing project to develop a culturally relevant and functionally valid assessment battery for autistic children and young people with high support needs— who are often excluded from global research due to language and cognitive barriers.

To this end, 250+ participants across seven domains have been assessed through partnerships with 10+ institutes, special schools and day care centres, with early findings submitted to INSAR 2026

Looking ahead, this work will form the foundation of a longitudinal databank to inform clinical practice, service planning, and policy at IAC and across India.

At Khoj, we remain committed to research that leads to better understanding, better care, and better futures for the autism community.





A Partnership Rooted in Purpose



Two Institutions, One Vision: India Autism Center & Ruskin Mill Trust



Through our partnership, we are integrating experiential learning and therapeutic practices into our campus and care approach.

At India Autism Center, we believe that learning and care must be part of everyday life. This belief led us to partner with Ruskin Mill Trust, a UK-based organisation known for its experiential and therapeutic approach to education for young people with special learning needs.

Our partnership is grounded in shared knowledge and values. Ruskin Mill Trust's philosophy — inspired by arts, crafts, agriculture, and living skills — guides how we shape our clinical practices and curriculum. Their insights help us move beyond isolated therapies toward learning through meaningful daily activity.

One important area of collaboration is biodynamic agriculture and campus design. Drawing from their experience, we are developing parts of the Samaavesh campus using biodynamic principles, where nature, routine, and purposeful work support emotional regulation, physical wellbeing, and a sense of dignity.

As our knowledge partner, Ruskin Mill Trust helps our teams approach interventions in ways that are more therapeutic, more holistic, and more respectful of each individual's strengths and rhythm. Together, we are building a care model where education is lived — and where individuals with autism are supported not only to receive care, but to grow, contribute, and belong.

Our Key Partners

Corporates



United Breweries



Institutes



सत्यमेव जयते

National Institute for the
Empowerment of Persons with
Intellectual Disabilities



Institute of
Neurosciences
Kolkata



Inventing Harmonious Future



NGO & Foundations



Our Key Donors

We are deeply thankful to our generous supporters who are helping us bring the India Autism Center to life.





and

250+

individual donors.



Purple Fest Goa 2025



IAC Puja Parikrama 2025



Neurounity Mumbai 2025



MassArt Durgotsav 2025



Art Therapy at Marga



Special Screening of Sitaare Zameen Par



Childrens Day 2025



Play Therapy Workshop at TNU

Performance Highlights

Thousands reached, hundreds trained, and a team that's growing fast. But this is just the beginning. The next chapter? Bigger reach, deeper impact, and bold steps toward inclusion.

Impressions by Outreach



70,000+

Followers Across All
Social Media Platforms

6,500+

Individuals Reached

20+

Events Organized

Team Strength



300+

Currently Employed

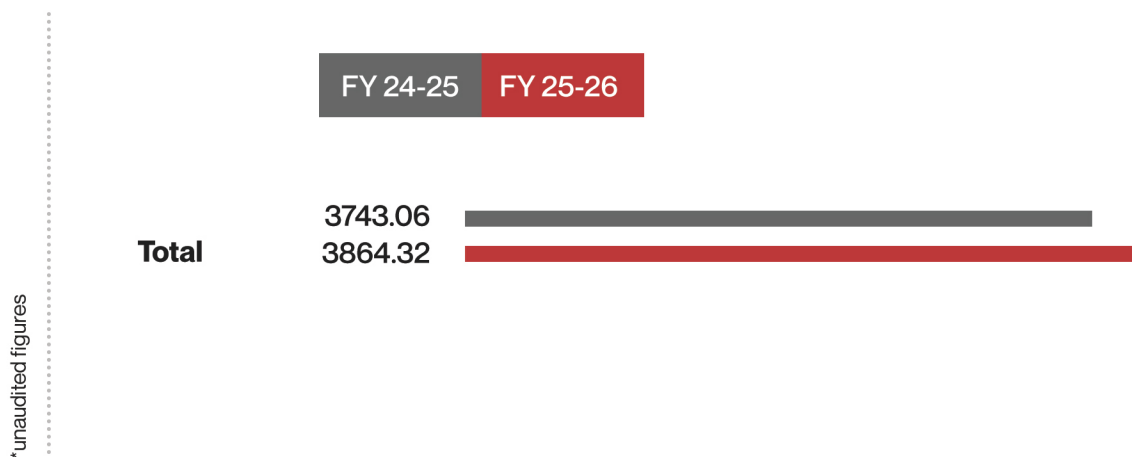
500+

Within the Next Year

Financial Snapshot

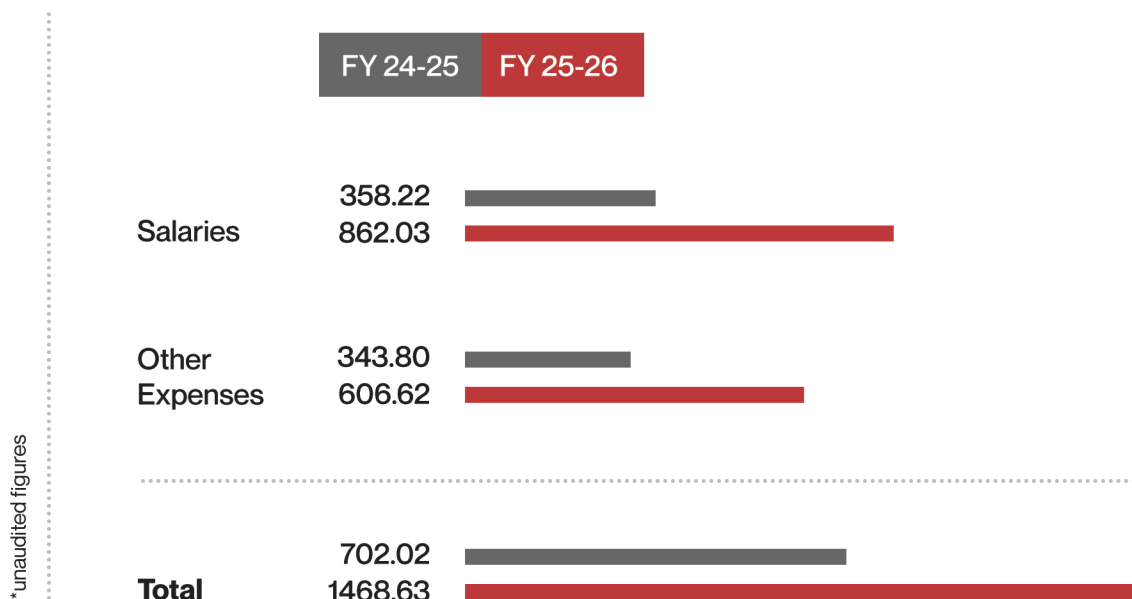
Fund Received

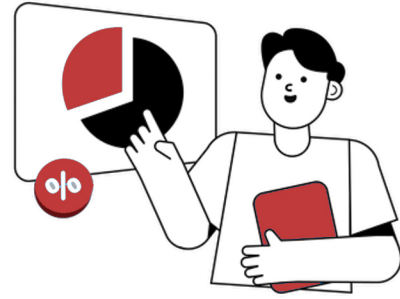
(₹ in Lakhs)



Application of Funds

(₹ in Lakhs)





Funds Received

till 31/ 03/ 2026

(₹ in Lakhs)

17,191.04

*Unaudited Figures

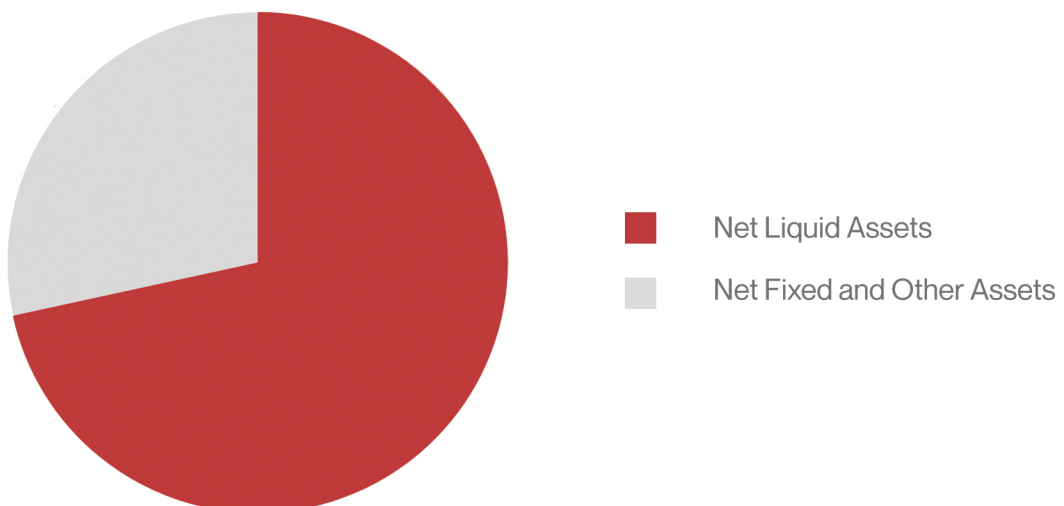
Application of Funds

till 31/ 03/ 2026

(₹ in Lakhs)

Net Liquid Assets	7,886.28
Net Fixed and Other Assets	3,129.68
Total	11,015.96

*Unaudited Figures





Moments That Speak





Together, We Can Do More

*Every effort counts.
Every voice matters.*



Reach out to us at

info@indiaautismcenter.org