



# Khhoj

Research Department of India Autism Center



## Our **Vision**

To make India a driving force in autism research by grounding our work in real, local experiences and sharing those insights with the world to spark global change.



## Our **Mission**



Bring India's untapped research potential to the world stage, where it belongs



Put culturally relevant research at the heart of how we understand autism in India



Team up with experts across the globe to learn, share, and grow together



Design tools and strategies that truly work for India's diverse autism communities



## **Autism research is a journey of hope**

each discovery brings us closer to understanding, embracing, and empowering unique minds.





## Our Landmark Projects



### **Developing a Phenotypic Test Battery**

Culturally relevant behavioural test aiming to expand meaningful research and participation for autistic individuals with high support needs.



### **Autism Spectrum Disorder and Parkinson's Disease Overlap**

A study examined the overlap between autistic traits and Parkinson's, with findings presented at INSAR.



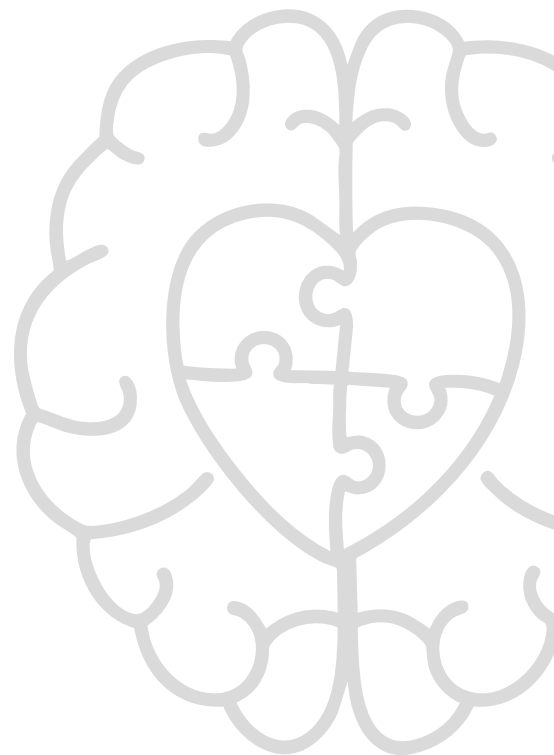
### **Active Ingredients for Global Youth Mental Health**

In collaboration with global partners, a Wellcome Trust project explored what truly supports young people’s mental health—in low and middle-income countries(LMICs).



### **Autism Community Priorities in India**

A nationwide study explored the priorities of the Indian autism community, with results presented at INSAR.



# BRAIN

BENGAL RESEARCH ASSOCIATION FOR INTEGRATIVE NEUROSCIENCE

**A Collaborative Initiative By**

**tcg crest**

Inventing Harmonious Future

CHINTA (TCG Crest)



Institute of Neurosciences Kolkata (I-NK)



India Autism Center (IAC)

# Our Partners in **Discovery**

---

Breaking new ground in **neuroscience**  
and **neurodevelopmental research**

## **What** We're Building Together?

---

- Cutting-edge research  
in neurodevelopmental  
conditions
- A bridge between  
clinical science and  
community needs
- Inclusive, impact-driven  
approaches to autism  
and behavior studies



# Join Us

on the Frontiers of Discovery

---



Drop us an email at  
[research@indiaautismcenter.org](mailto:research@indiaautismcenter.org)

